



Eugene-Lane Branch The News

empowering women since 1881

<http://eugenelane-or.aauw.net>

2013-2014

September 2013

**Saturday, September 14
Westminster Church
9:30 - 10:00 Social Hour
10:00 Business Meeting
10:30**

AAUW- WHAT'S IN IT FOR ME?

What an intriguing title!
Come find out what's in it for
you!

We will be focusing in
our programs, now and in the
future, on our AAUW mission..

We especially want to invite
women who would be
interested in supporting other
women and girls as well as
wanting to make personal
growth. The meeting is open to
the public

The Board is
hostessing the meeting--be
prepared to enjoy a cornucopia
of treats!

In this issue

A letter to us	3
AAUW Fellowships	6
From Jo's Desk	2
Happy Birthday	2
In Memoriam	3
Interest Groups	7
Member News	2
Mission Statement	7
Public Policy Update	3-6
Rosters, The News	7

A Special Announcement!

The Center for the Study of
Women in Society is presenting
a three-day celebration of
feminist research, activism, and
creativity at the University of
Oregon on November 7, 8, and
9. The calendar of events
includes keynote address by
author Ursula K. Le Guin, and
a film premier, *Agents of
Change*. Expect more
information in October.

Thank you, Jo Ann

JoAnn Ellis is leaving as
Manager of AAUW
Advertising after many years
of obtaining sponsors for our
branch. We extend our sincerest
thanks to you, JoAnn, and
kudos to husband Bob for his
help!

We therefore need a
replacement chair. JoAnn
handles all the business of
obtaining the ads by phone, and
she is most happy to mentor her
successor. She has built a
network of merchants who
endorse our mission, so the
next chair has a ready-to-go
base. Please let Jo know that
you are willing to continue
this vital service!

2013-2014 Meeting Schedules

Branch: Saturday, 9:30 a.m.-
noon, Westminster Church

2013

September 14
October 12
November 9
December 7

2014

January 11
February 15
March 8
April 12
May 10
June 14

Board: Wednesday, 10:00
a.m.-noon, Quail Run

Clubhouse

2013

September 11
October 9
November 6

(no meeting in December)

2014

January 8
February 8
March 5
April 9
May 7
June tba

From Jo's Desk

---Jo Brew, President



Carol Hildebrand was at the Springfield Band Concert I attended this week and she commented that June seemed like a long time ago. I agreed. In the meantime I've attended a wonderful family wedding, gone to an exciting performance of *Thoroughly Modern Millie* with a granddaughter performing, had visits from grandchildren and great-grandchildren who live in Southern California, spent a very hot and smoky weekend in Medford for Ken's high school reunion and time with his brother and wife, visited lots of towns and places along Highway 99 and joined other AAUW leaders for Leadership training at Willamette University in Salem with Carene, Linda Wittorff and Cindy Parker. June was a long time ago!

It was good to have four of us taking part in the training so we all had exposure to new ideas, information on what is available from the state and national, and a common basis for our own branch planning.

When we came back, Carene and I met with Linda Wittorff, Membership Vice President, and Jill McCleary, Program Vice President, and planned a few of our mission-based programs and ways to work toward achieving some of our own branch goals.

On the personal front, June has seemed ever farther in the past. The book I'm working on is not published like I'd planned. Disappointing, but I'm going to like the end results a lot. As a fiction writer, I'd never had to deal with finding pictures or deciding on formats, waiting for other people to contribute and deciding how much information to include--so much to learn. When the copy editor and I began putting the material I'd assembled together, the book was going to be twice as large as I'd planned or wanted. As summer ends we have two nearly completed books, the first, with the stories of Highway 99 in Oregon, about a month away, and the second, the history of Highway 99, ready three or four

months later. The process was a little like changing horses mid-stream, slow and painful.

I'm looking forward to seeing everyone again and getting a new and exciting year off to a good start. The theme for our first meeting will be AAUW-WHAT'S IN IT FOR ME? So come and join as as we get our year underway.

Member News

Carene-Davis Stitt, our co-president, is also President-elect of Soroptimist International of Eugene. This busy member is also a partner in DeltaNet Management Consultants

www.deltanet-consultants.com.

Welcome to our new members!

Lois Hopper is renewing, and is a retired educator who received her M.Ed from the University of Oregon. **Sharon Beverly** has transferred from Merced, California, where she earned her Master's degree in American and British Literature. **Edna DeHaven** is renewing, and is a retired college Professor, earning her PhD from the University of Oregon. **Mary Ellickson** is another University of Oregon alumna, and she has volunteered to chair the Out-to-Lunch Interest Group. **Miriam Aiken** is a Bowling Green State University alumna and a former Peace Corps member. She is now co-president of the League of Women Voters and was invited to join us by Stephanie Winsor. **Louise Johns** holds an Ed.D in Education Management from California State Polytechnic University.

Happy September Birthday to.....

Edna DeHaven
Sharon Beverly
Charlotte Sabin



In Memoriam

Betty Fryefield passed away August 3, 2013. She was a California native, receiving her collegiate education there, including teaching credentials. She married Sam Fryefield in 1952 and they were Californians until they moved to Eugene in 2006. Although Betty was a member of the branch only a few years, she attended as many branch meetings as possible and supported branch activities.

The following is an excerpt from a letter dated August 8, 2013, from Wendy Jett, Lane Community College Foundation Director::

“Please accept my sincere thanks for your recent \$500.00 gift to Lane Community College Foundation which we received on 8/8/2013. This special gift will be directed to the AAUW Kappy Eaton Scholarship Endowment Fund in honor of Kappy Eaton, as you requested. We are grateful for your commitment to Lane.”

The \$500 referenced in the letter was accumulated through our e-Scrip purchases! eScrip allows Market of Choice to give up to 4% of customer purchases to the organization of the customer's choice year round when using either a debit or credit card. If you would like to join us by registering with our group, go to www.escrip.com American Association of University Women, Group #500003673. This is an easy way to raise funds--by grocery shopping!

And along with this gentle reminder for eScrip, please remember our Looking Glass project, our book sale at each branch meeting for LAF funds, and support for our sponsors.

Thank you, dear readers, for all that you do for our branch!

AAUW PUBLIC POLICY UPDATE

September 2013

--Kappy Eaton, Public Policy Chair

State of the State

This report will cover some of the important issues for AAUW and Oregonians in general that were discussed and acted upon or died during the 2013 session of the 77th Oregon Assembly. It was convened for the purpose of organizing on January 14, began hearings of bills on February 4, and adjourned July 8. The statutory date was July 13. While a number of critical decisions were made, another group of important concerns was left “on the cutting room floor,” so to speak. My personal assessment would grade the effort at C+ because of political party “drawing lines in the sand” regarding too many issues.

2013-15 Legislatively Adopted Budget (LAB)

The final budget agreement is comprised of planned expenditures of \$15.6 billion General Fund (GF), \$0.8 billion Lottery Funds, \$26.6 billion Other Funds (fees, contracts, charges, etc.), and \$16.8 billion Federal Funds. The total state budget of \$59.8 billion is a 4.6% increase from the 2011-2013 LAB, excluding Oregon University System Other Funds and Federal Funds which are no longer part of the state budget.

The basic revenue numbers are representative of the May 2013 economic and revenue forecast. Lottery Funds are split between regular Lottery Funds and Measure 76 Lottery Funds, which are dedicated to specific natural resource uses. There are three sections to the state's budget tables: Resources, Expenditures and the Ending Balance. Each is comprised as follows:

*Resources: based on May 2013 forecast, GF resources adjusted to estimated interest costs for use of Anticipated Notes by the Treasury, Lottery Funds reduced by projected distributions for county economic development and transferred to Education Stability Fund, additional resources approved by legislative action, includes amount of additional tax credits beyond current law, and

actual final resources officially presented at close of session forecast in September.

*Expenditures: identified as approved in all budget actions taken by the Legislature during the regular 2013 session for the 2013-15 biennium.

*Ending Balance: regular ending balances include \$150 million GF and \$15 million Lottery Funds (another \$3.9 million for specific agency cash flow needs) and the supplemental ending balance created due to uncertainty regarding the state's overall economic situation, totaling \$154.9 million GF and \$1.4 million Lottery Funds. The Measure 76 Lottery Funds, \$10.1 million, is for cash flow and debt service requirements of the Parks and Recreation Department.

A brief tally of the 2013-15 LAB is as follows, based on the May 2013 Revenue Forecast:

1.Total Resources: General Fund \$15,827.3 billion; Lottery Funds \$910.4 million; Measure 76 Lottery Funds \$174.9 Million; Dedicated Distributions: Education Stability Fund, \$189.8 million; County Economic Development \$33.8 million. Total current law resources: \$16,688.7 billion. With the additional funds resources, such as the Emergency Fund \$50.4 million, of \$139.7 million, the Net Resources for the biennium total \$16,775.1 billion.

2. Expenditures: Total GF budgeted expenditures are \$16,439.8 billion, with a projected Ending Balance of \$179.1 million. The major expenditure areas include K-12 (State School Fund) \$6,550 billion; Community Colleges, Universities and other education \$1,929.2 billion; Human Services \$4,236.6 billion; Public Safety \$2,038.1 billion, and Judicial \$638.9 million.

Fiscal Policy

The Governor's proposed budget, presented December 1 as required by law, and the Ways and Means Chair's budget which came about the end of March, were not too far apart in terms of the priorities relating to K-12, public safety and PERS reform. Both gave public education \$6.5 billion, sought revenue from reduced or repealed tax credits, continued the Provider tax (\$2 billion with additions), and targeted PERS. However, the fault

line between the Republican (Rs) and the Democrat (Ds) budget plans was drawn early and was never resolved despite efforts that continued until the session ended. The "Grand Bargain" was in play until the final gavel. It consisted primarily of two bills that would have given about \$7 billion to K-12, and additional millions to the universities, community colleges and mental health. Because tax revenue was included, a 3/5 majority was required – two Rs votes plus all of the Ds.

The PERS reform consists of two pieces: reduced cost of living annual benefits to retirees (given July 1) and repeal of those benefits to non-resident Oregon PERS retirees who do not pay Oregon income taxes. The saved revenue is about \$800-\$900 million. The measure was passed early in the session on party lines, and the attempt to further reduce and gain additional dollars up to almost \$1 billion via the "Grand Bargain," died at *sine die*. The Ds would not approve it.

The "Grand Bargain" tax package would have reduced higher income individual's personal income deductions, raised the corporate income tax rate, raised tobacco taxes by 10 cents, and revised the senior medical deduction through a means test, among other income producing elements. The Rs would not support it because it did not lower taxes on small businesses. Thus the final budget was passed, and the opportunity to really move Oregon forward for the next decade was lost.

Elections, Voters and Political Campaigns

The Secretary of State pressed for several changes in voter registration with mixed results. The change in title for the long-term absent elector to military or overseas elector to conform to the federal law was enacted. However, the modernization of voter registration by an electronic form through the DMV of newly licensed drivers, and the reduction of the registration age to 16 years didn't make it through the Senate. TAAUW supported these bills. The bill to require the state and all counties to provide voter information materials in other than English was changed to establish a Task Force on

Minority Language Voting Materials and report to the Legislature by October 1, 2014, for possible action in 2015.

In the interests of preventing vote fraud, the delayed ballot security measure was approved. It calls for video scanning of all areas in county election offices and provides a detailed process and time lines for destroying spoiled and unused ballots of all kinds. Several Election Division bills relating to initiatives and campaign reforms were passed, including requiring chief petitioners to do criminal background checks of paid petitioners (now done by Secretary of State), and requiring that any organization, individual or entity that pays petitioners must register with the Secretary of State and receive training in the process. Also in the campaign finance area, more transparency regarding independent expenditures given for both candidates and measures will be required by filing contributions electronically to the Secretary of State and appearing on ORSTAR for public scrutiny.

University Governance

After a long and bumpy road, the proposal to allow Oregon public universities to establish local boards of directors was adopted. The University of Oregon and Portland State University are granted immediate authority (UO expected by fall 2013) and the other five institutions in the state system have the ability to move forward in the future. The law allows the internal boards to set tuition, no more than 5% increase per year, with approval of the Oregon Education Investment Board (or the Higher Education Coordinating Commission), hire and fire presidents, and use bonding for projects. The board members, 11-15, will be appointed by the Governor who also will determine if the required faculty member has a voting right (a student must be appointed and has voting rights) and if a staff member will be appointed ex-officio. Funding is the responsibility of the institution. Our interest currently has to do with the cooperation and coordination of programs and services among the schools and interests of students and faculties. Now is an

excellent time to be studying Oregon higher education.

O&C Counties

Our concerns about the functioning of local governments has led us to follow the fiscal crisis in several Oregon counties over the past several years as the combination of reductions in the federal timber payments coupled with the recession and lower property tax incomes have caused serious cuts in public safety and human services. The Legislature passed three measures which offer relief, if not permanent solutions to the problems. Lane County is one of the jurisdictions in possible need of assistance. The major piece gives the Governor the ability to declare a county in fiscal crisis because it cannot provide a safe/secure level of public safety for its citizens. At that time, a plan will be put together to provide funds for public safety and the way to pay for it, both with state and local means. A second statute provides the Secretary of State with the authority to take over the elections function and provide for assessment and taxation procedures, considered essential by state law. A third bill continues the ability of impacted counties to use federal road dollars for sheriff patrols, first passed in 2012. Curry, Josephine, Lane and Douglas counties are among those in danger, particularly the first two.

Last Minute Decisions

The Citizen Initiative Review Commission bill was in Ways and Means for months, finally coming out just in time to be passed. No reason was ever given as to why this privately funded entry continuation was sent to Ways and Means in the first place nor why the subcommittee on General Government didn't move it out.

The worst defeat was the refusal of the Senate Rules committee to even hold a hearing on the National Popular Vote Compact. It was passed fairly early by the House, 38-21, and despite continued requests from lobbyists, constituents, other legislators and outsiders, it died in committee.

Social Policy

One of the Governor's public safety priorities was modification of Measure 57 and a slowdown of the increasing burden of prison costs. The Public Safety Commission recommendations for changes were considered by the Legislature and several adopted. The revised measure did not include Commission proposed language changes in Measure 11, but adjusted prison time and parole violation time limits. Incentives for earned time in prison, transition and early discharge, resulting in some savings to the Department of Corrections that will be used for Corrections to provide services and treatment to reduce recidivism.

The Department of Human Services budget was increased for the Jobs Program, and the Employment Related Day Care subsidies for employed parents will cover 9,000 cases and additional funds will increase the child care provider rates. Also, the budget, increased with Federal dollars, will include child welfare, vocational rehabilitation, and people with disabilities and developmentally disabled adults and children.

Most of the public education budgets passed with improvements and forward thinking. Supported programs and services include creation of a Youth Development Division, the Office of Child Welfare, Early Intervention and Youth Investment. The Department of Education budget includes the office of Deputy Superintendent and support for the State Board of Education and oversight of K-12. The Oregon Education Investment Board budget pays for the Chief Education Officer (oversight of all Oregon public education), 11 staff for the 0-20 education system plan and projects and studies, with a report to the 2014 session.

Natural Resources

Many land use issues have been addressed this session, some of them detrimental to Oregon's protection and overall land use and conservation system. Opposition to such issues as extended aggregate mining on high value farm land ultimately led to keeping the current status. One

success was the defeat of sludge gold mining in protected rivers which had been increasing due to bans in California, Idaho and Washington.

Water rights, storage and the Columbia River also brought concerns and some opposition. Successful was the protection of Waldo Lake from motorized usage and the emergence of a bill to provide money for study and on-the-ground water storage projects looking at continuing climate change issues.

The Governor's 10 year Energy Plan received plenty of attention but no final action by the Legislature.

AAUW Fellowships and Grants

This year marks 125 years of providing resources to empower women. The impact of AAUW's funding is manifested in the remarkable achievements and successes of our former fellows and grantees. The persistent growth and consistency of funding are thanks solely to the outstanding dedication and efforts of AAUW branches and their members.

AAUW continues to be one of the largest sources of funding for graduate women's education—providing more than \$85 million to more than 11,000 fellows and grantees since awarding our first fellowship in 1888. There are more than 800 Named Funds that supply the resources available for fellows and grantees. Women who receive funding from AAUW go on to make truly incredible—even life-changing—contributions to society, women like Marie Curie (1920), Melissa Harris-Perry (2001), Judith Resnik (1975) and Rachel Carson (1956).

During the 2013 National Convention in New Orleans, fourteen more fellowships were funded.

Interest Groups

Afternoon Book Group

Third Monday, 2:00 p.m.,
Contact Betty Kjeldgaard,
541-683-4926. [Open](#)

Alpha Bridge

Every Tuesday, 1:30 p.m.
Willamalane Senior Adult
Activity Center, Springfield.
Contact Ardith Hinman,
541-747-4310. [Open](#)

Fourth Monday Bridge Group

1:00 p.m. Contact Donna
Pierce, 541-344-3365,
[Open](#)

Out & Abouters

Periodic trips around our
part of Oregon; newsletter/
ReaderBoard announce-
ments. Contact Linda
Wittorff, 541-844-1422.

Out-to-Lunch Bunch

Contact Mary Ellickson,
maryellickson@gmail.com

Readers' Theatre

Contact Barbara Carter,
541-554-2944. 1-2 OPENINGS.

Vision

AAUW will be a powerful
advocate and visible leader in
equity and education through
research, philanthropy, and
measurable change in critical
areas impacting the lives of
women and girls.

Mission

AAUW advances equity for
women and girls through
advocacy, education,
philanthropy and research.

Value Promise

By joining AAUW, we belong
to a community that breaks
through educational and
economic barriers so that all
women have a fair chance.

Diversity

In principle and in practice,
AAUW values and seeks a
diverse membership. There
shall be no barriers to full
participation in the
organization on the basis of
gender, race, creed, age, sexual
orientation, national origin,
disability or class.

ROSTERS

Elected:

Co-Presidents: Jo Brew/
Carene Davis-Stitt
Program VP: Jill McCleary
Financial VP: Stephanie Winsor
Membership VP: Linda Wittorff
Communications. VP:
Elleen Levy
Recording Secretary:
Cindy Parker

Appointed:

AAUW Funds Co-Chairs:
Ardith Hinman, Gorgie Hofma
Public Policy: Kappy Eaton
Member Chairs:
Advertising Manager:
JoAnn Ellis
Book Exchange: Ellen Otani
Branch Brochure: Wendy Cook
Bylaws:
Calling Committee: Pat Lanier
C/U Liaison, UofO:
C/U Liaison, LCC:
Cathy Lindsley
Directory: Judy Greer
Financial Records: Pat Zeller
Historian: Linda McCleary
Hospitality: Jill McCleary
Newsletter: Marian Spath
Nominating Committee :
Website Manager: Wendy Cook

The News

is published monthly, September
through June, by Eugene-Lane
Branch AAUW. It is distributed to
members by e-mail or regular mail.
Deadline is the 20th of each month,
August through May. Items are to be
submitted to the editor by that date.

Staff

Editor: Marian Spath, 541.686.3271
mspath28@comcast.net

Ad Manager: JoAnn Ellis
541.747.4715
bojjo999@comcast.net

Proofreader: Pat Lanier

**The Handy Reminder on how
to Introduce AAUW to
Prospective Members:**

REAP
Research +
Education +
Advocacy +
Philanthropy

because
equity
is
still
an **issue**



Winona Jean Carlson
Hostess

**Jean-Marie's Fabrics
& Sewing Machines**

Sewing Classes, Alterations, Bridal Fabrics,
Quilting Fabrics, Notions, and Sewing Machines

637 Main Street
Springfield, OR 97477
Phone: 541.746.0433
or 888.292.4241
jmf@jeanmariesfabrics.com

brothers
CARPET CLEANING, INC.

DAWN BRANDON

485-4567

www.brotherscc.com

24 hour spot cleaning, help & more...

"Don't worry!
Mom will call Brothers!"




Phone (541) 461-1737
Fax (541) 461-0091
ccb #109012

Complimentary
One Hour Consultation
www.sperrytreecare.com

227 W 13th Ave., Suite 201 - Eugene, OR 97401



Springfield Cleaners

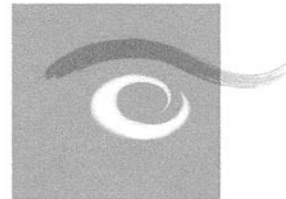
"When 1st Impressions Count"

Cassandra (Casey) Dresser

Full-Service Dry Cleaning
Shirt Service • Alterations

206 Main St. • Springfield, OR 97477 • 541-747-3678

Comprehensive Eye Care
for
Infants, Children & Adults



Lifetime Eye Care

- Vision Therapy
- Contact Lenses
- Designer Frame Gallery
- Learning Related Vision Care
- Stroke & Head Injury Rehabilitation

Carol Marusich, OD, MS, FCOVD

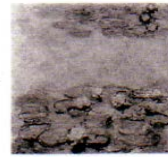
Robin Bautista, OD

541.342.3100 • 4765 Village Plaza Loop, Eugene

LifetimeEyeCare.net



"From your doorstep to their doorstep"



Melisa A. Monson, DPM, PC
Santa Clara Foot Care Center

45-F Division Avenue
 Eugene, Oregon 97404
 541-689-3332

Office Hours
 By Appointment



JO-BREW

www.Jo-Brew.com

541.688.8546 Jo@Jo-Brew.com

D'n'A

Doug Heydon
 guitar & banjo
 Amey Herman
 violin

Celtic, French-Canadian,
 Scandinavian & Classical
 music for all occasions

541 746 1060

ameyherman@gmail.com

www.ourdnamusic.com



Connie Carrigan
 Hairdresser

541-870-9173 cell

Jenny's Hair and Company
 2833 Willamette, Suite D
 Eugene, OR 97405 • 541-484-2894



Specializing in Breast Prosthesis

Cynthia Crawford
 (541) 345-9204

335 Pearl Street
 Eugene, OR 97401



Ken Rayhorn
Nathan Rayhorn

HELPFUL HANDS CONSTRUCTION, LLC

We're Always Handy!

P.O. Box 2942
Eugene, OR 97402

541-556-1593

debkenr@gmail.com

CCB# 187553

Licensed, Bonded, & Insured

- Chinese & American Food
- No MSG Added & 100% Vegetable Oil
- Beer & Wine
- Dine In Or Food To Go
- Party Trays Available
- Banquet Facilities Available
- Gift Certificates Available

樂園酒家

Tel. (541) 345-7448
Fax (541) 345-0806

2360 West 11th Ave.
Eugene, OR 97402

Monday-Friday 11 a.m.-10 p.m.
Saturday & Sunday Noon-10 p.m.
www.LokYaunRestaurant.com



Eugene's Flower Home

— THE UNIVERSITY FLORIST —
1193 HARLOW RD.
SPRINGFIELD, OREGON 97477
PHONE 541-485-3655

*Patricia L. Brooks
Laurie Brooks-Headley
Tim J. Brooks*

www.eugeneflowerhome.com



**Northern Lights
Christmas Tree Farm**

Bob & Lynn Schutte

36777 Wheeler Rd, Pleasant Hill, OR 97455

541.746.5161 or FAX 541.741.2490

labschutte@aol.com

www.northernlightschristmastreefarm.com



MARY KAY
 Joanne Block
 Independent Beauty Consultant


557 Dean Avenue
 Eugene, OR 97404
 (541) 461-0983
 (541) 221-1493
 joblock79@hotmail.com
 www.marykay.com/jblock



PROFESSIONALS
 PROVIDING
 COMPREHENSIVE
 FINANCIAL,
 RETIREMENT AND
 ESTATE PLANNING

CHARLENE CARTER, CFP®
 PRESIDENT AND CERTIFIED FINANCIAL PLANNER™

541.683.2900 | 800.338.4436 | FAX 541.343.7945
 871 COUNTRY CLUB ROAD | PO BOX 7848 EUGENE, OR 97401
 CHARLENE@CARTERANDCARTER.COM



ECONO SALES, INC.
*Upholstery and Drapery Fabric
 and Supplies*

Monday thru Saturday
 9:30-5:30

330 Main Street
 Springfield, OR 97477

(541) 746-5003
 Fax (541) 741-4666

Johnson's Carpet Cleaning

Truck Mounted • Hot Water Extraction
 Upholstery Cleaning • Free Estimates

Kirk Johnson 421 S. 4th St.
 (541) 746-3364 Springfield, OR 97477

Serving Lane County Since 1986
 CCB# 111024

ASH PAINTING
 Pressure Washing • Spray Painting
 Residential • Commercial

Cori du Pont Phone: (541) 543-0366
 Email: Fax: (541) 688-9223
 ASHPAINTING2010@GMAIL.COM



Wynant's Family Health Foods
 Your Complete Health Foods Store
 "Your Good Health is Our Business"

722 South A St., Springfield 541-746-4251
 Oregon, 97477

www.wynantshealth.com

Eugene-Lane Branch AAUW
533 Covey Lane
Eugene, OR 97401

Meeting Calendar

Wednesday, 10:00, September 11, 2013, Board Meeting,
Quail Run Clubhouse *All members welcome.*

Saturday, 9:30 a.m., September 14, 2013, Branch Meeting
Westminster Church

Wednesday, 10:00, October 9, 2013, Board Meeting,
Quail Run Clubhouse *All members welcome.*

Saturday, 9:30 a.m., October 12, 2013, Branch Meeting
Westminster Church

**November 7-9, Center for the Study of Women in
Society Celebration, University of Oregon**

April 25-27, 2014, Oregon/Washington Joint Convention,
Embassy Suites Hotel, Portland, OR